

**Rapid Wane of COVID-19 in the Indian Territory of  
Lakshadweep Validates Prior Existence of Long Term  
Immunity that protected against Severe COVID-19 in the  
Population**

PRABIR CHAKRAVARTY, PhD

Former Scientist, Albert Einstein College of Medicine, 1300, Morris Park  
Avenue, Bronx, New York-10461

## **ABSTRACT**

The SARS-CoV-2 virus, the causative agent of COVID-19, has become a formidable enemy to mankind for its ability to quickly mutate & evade the immune system of the host. We have reported earlier that the territory of Lakshadweep in India reported the first case of COVID-19 in January, 2021 long after its invasion in the other states of the country. And following its first appearance, there was gradual spread of the disease in the population which was waning by the end of March, 2021. The waning of COVID-19 was attributed to prior immunization of the population with MMR (Mumps Measles Rubella) vaccine. In this article we have continued the study until July 31, 2021 and a significant observation was that after a pause in the number of COVID-19 cases, there was an increase in number of confirmed & active cases of COVID-19. However, an abrupt fall in the number of active cases of COVID-19 followed and by six months there were insignificant number of active cases of COVID-19. Significance of these observations has been discussed in this article.

Key words: COVID-19 – SARS-CoV-2 - Active case - MMR Vaccination.

## **I. INTRODUCTION**

Ending the current COVID-19 pandemic and preventing recurrence requires vaccines that could provide long-lasting immunity against the causative virus, SARS-CoV-2. To achieve this goal, an effective vaccine is required to elicit both CD4 and CD8 T-cell immunity, in addition to the production of neutralizing antibodies by B cells. However, the present regimen of vaccines predominantly produces neutralizing antibodies which may not provide long lasting protection against SARS-CoV-2 virus.

However, it has been observed that immunological status of a population may play an important role in preventing or slowing down the spread of the virus in the population. In that context, it is noted that some populations are more vulnerable to the SARS-CoV-2 virus resulting in high mortality from COVID-19. In a series of papers, we have demonstrated earlier that populations having prior immunization with different pathological microbes had a profound effect on the spread of COVID-19 in the Indian population (1-7). In our recent study with data from a cluster of eight states, showed a marked decrease in the number of confirmed COVID-19 cases following Lockdown with the exception of Lakshadweep, where no confirmed cases of COVID-19 was recorded until December, 2021. While exploring the plausible cause for this uncharacteristic resistance against the development of COVID-19 for ten months and more since its first appearance in the country, we found that it was probably due to existence of strong underlying immunity in the population against SARS-CoV-2 that could have developed due to prior immunization with MMR vaccine (8). The region of Lakshadweep

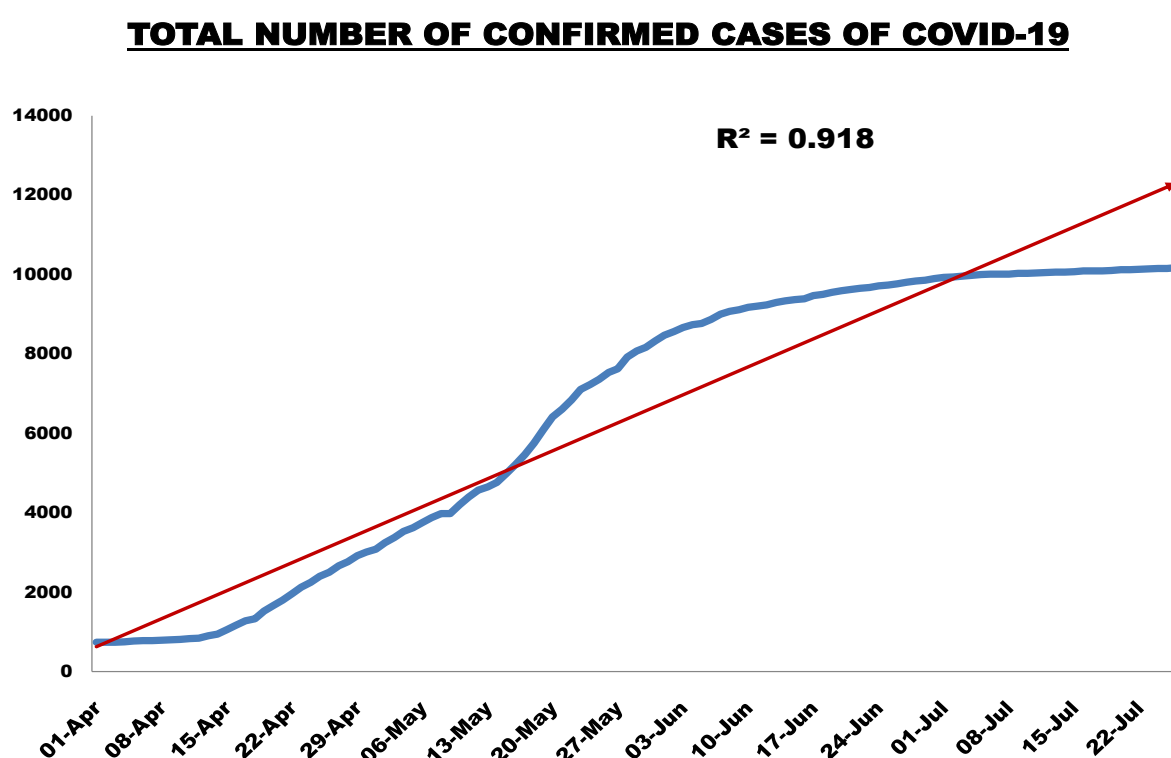
has a history of vaccination/immunization against various pathogens which included Rubella, measles etc. One of the world's largest vaccination campaigns against measles and rubella was launched in February 2017 in Lakshadweep and some other states by the Government of India. Under the Measles-Rubella (MR) campaign, all children in the target age group (between 9 months and less than 15 years) were given a single shot of MR vaccination, irrespective of their previous measles/rubella vaccination status or measles/rubella disease status with the anticipation that the additional campaign dose would boost the already existing immunity in the subjects and thereby protect the entire community by eliminating transmission of measles and rubella and plausibly from other related viruses. There are recent studies showing antibody titre to MMR virus was significantly higher in those who had confirmed cases of COVID-19 (10, 11). In this article, the study in Lakshadweep has been extended until complete waning of active cases of COVID-19 in the population and the plausible significance of the results obtained has been evaluated.

**II. METHODS:** The present study was carried out on the data collected on COVID-19 from different sources that included the Ministry of Health, Government of India (web site at [www.mygov.in](http://www.mygov.in)); Health bulletin of Government of India and from other National and International News outlets. The raw data used in this study were from the month of January, 2021 when first case of COVID-19 was reported in Territory of Lakshadweep, to July 31, 2021. The Statistical analysis was performed by Microsoft Excel and power point programs and the correlation studies were

performed using web based Pearson Correlation Coefficient program. The data was considered significant when p value was less than 0.05.

**III. RESULTS AND CONCLUSIONS:** Briefly stated that more than two month long 'Lookdown' was imposed on March 25, 2020 to control the spread of COVID-19 in all regions of India. Following the end of complete Lockdown on 31 May, 2020, the Lockdown was gradually relaxed in a phased manner of 'one month' with some restrictions being maintained in some sensitive 'COVID-19 pockets' in the population. The implementation of Lockdown had a positive impact on limiting the progression of COVID-19 in the entire population (1-6), with no cases being recorded in the Union Territory of Lakshadweep until December, 2020. The first case of COVID-19 was recorded in later part of January, 2021. However, from the month of March, 2021, a second wave of COVID-19 started all over the country and the island of Lakshadweep was also affected. In our earlier study, it was reported that the first case of COVID-19 was detected during 3<sup>rd</sup> week of January, 2021 and henceforth the total number of confirmed cases of COVID-19 showed an increase, with marked volatility. However, the number of active cases of COVID-19 gradually subsided by March 31 and no mortality was recorded from COVID-19 (8). In this article, an extension of the previous study, it was observed that following a pause, there was a gradual increase in the number of confirmed cases of COVID-19 which continued until June, 2021. However, the curve gradually flattened. The **Figure 1** reflects the distribution of COVID-19 in Lakshadweep from 20 January, 2021 until 31 July, 2021. It was clear from the graph that the

actual number of confirmed cases of COVID-19 increased in linear fashion until middle of May, 2021 and thereafter it made a small peak and gradually flattened. There was a tendency of making a 'S' curve but it was incomplete signifying no further acceleration in number of COVID-19 cases. And the curve bucked the predicted trend line of confirmed cases ( $p$  value  $\leq 0.01$ ). The prolonged flattening of the curve from beginning of July, 2021 is encouraging. This observation was further supported from the data of active cases of COVID-19 in the population.



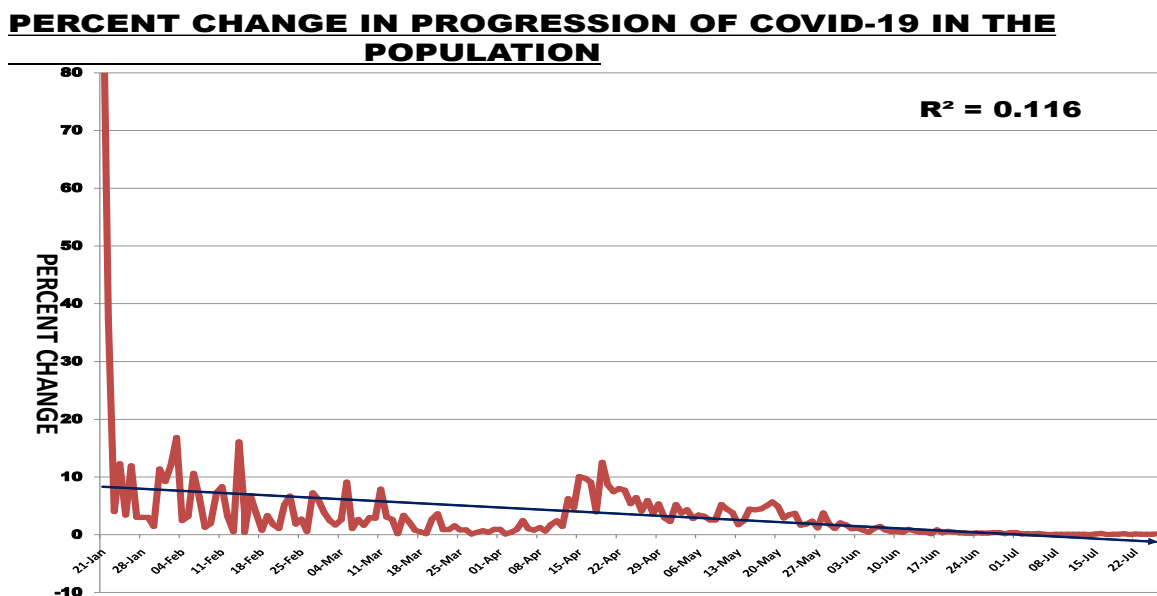
**FIGURE -1**

**Figure 1: The total number of confirmed COVID-19 cases in the Union territory of Lakshadweep showing a flattening of the curve which was consistent until 31 July, 2021.**

Such initial increase in number of COVID-19 cases in the population followed by flattening of the curve plausibly suggests a prior history of

immunization in the population. As discussed elsewhere, the late onset of COVID-19 in Lakshadweep was probably due to prevalence of immunity in the population from prior vaccination with MMR vaccine (8).

However, as we have shown earlier that the percent change in COVID-19 in the population serves as a better indicator of the progression of the disease in the early stages as it accounts for the volatility of the disease (3). In the present study, the percent change of COVID-19 in the population demonstrated a consistent downward trend in progression of the disease from the beginning (**Figure: 2**). After showing an initial volatility, the rate of progression of the disease stabilised from 22<sup>nd</sup> March, 2021 and thereafter remained flat until July 31, 2021, with the trend in progression of COVID-19 being not significant.



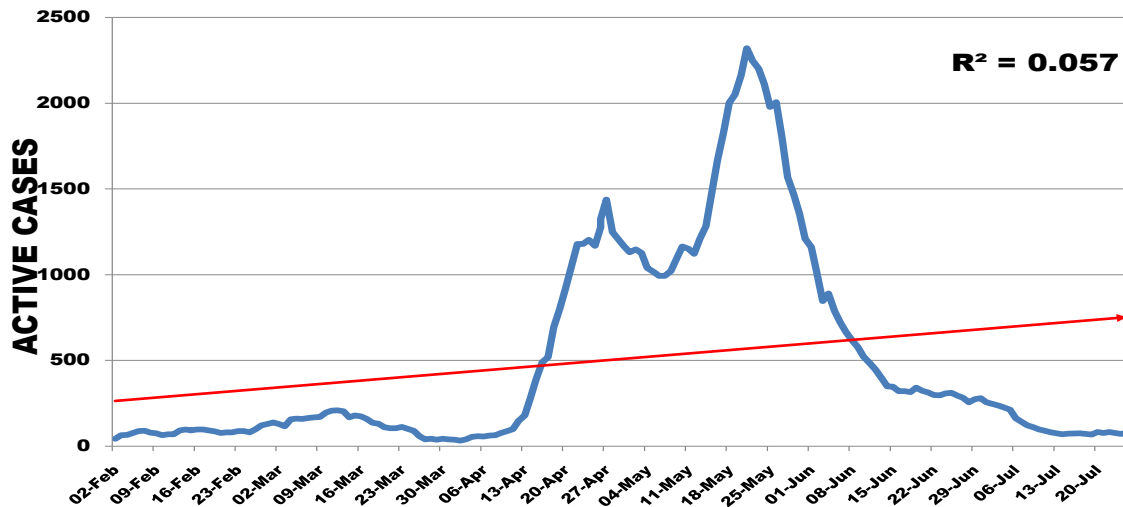
**FIGURE:2**

**Figure 2: The percent change of COVID-19 in the Lakshadweep population showed a downward trend with initial volatility. The trend line and actual progression was identical, showing a consistency.**

In order to assess the impact of COVID-19 in the population, the number of active cases of COVID-19 was assessed. As observed and reported elsewhere, the first active case of COVID-19 in the population in Lakshadweep was recorded on 2<sup>nd</sup> February, 2021 (8). In this study, the total number of active cases in the population from 2<sup>nd</sup> February, 2021 to July 31, 2021 is depicted in Figure: 3. It was interesting to note that when the second wave with high number of active cases was clearly visible in rest of the country, the active cases had just started to be visible in the population of Lakshadweep. The first peak in the number of active cases was made around 12-13 March, 2021 and thereafter the number declined as reported earlier (8). However, it was observed that following maintaining a low number of active cases in the population, there was a sharp rise in the number of active cases from middle of April reaching a peak around 13 May, 2021 (2<sup>nd</sup> wave). This rise in the number of active cases was accompanied with an abrupt increase in mortality rate of COVID-19 in the population. Following the peak in the number of active cases, there was an abrupt & rapid decline in the number of active cases of COVID-19 in the population reaching a nadir by the middle of July, 2021, thereafter the number of active cases was maintained at a base level as observed prior to 30 March, 2021. Interestingly, it was observed that within a span of only six months two peaks of active cases were made, which declined rapidly reaching a base level by the end of July, 2021 (Figure:3).



### **TOTAL NUMBER OF ACTIVE CASES OF COVID-19 IN THE POPULATION**



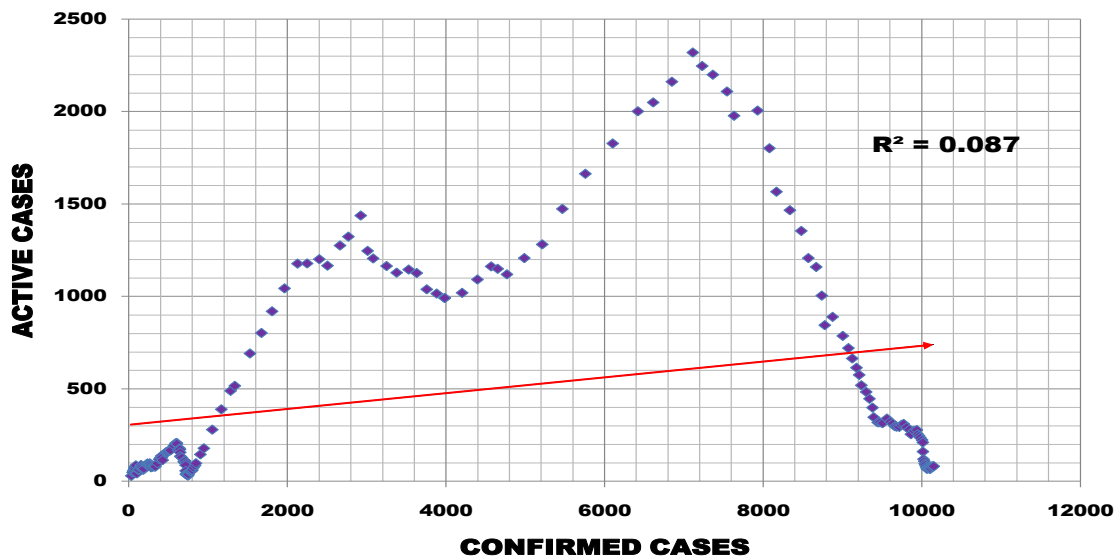
**FIGURE-3**

**Figure 3: Total number of active cases of COVID-19 in Lakshadweep demonstrated a rapid fall in number of active cases of COVID-19 after initial rise. The overall trend registered a non significant rise of active cases with  $R^2 = 0.057$ .**

Due to the rapid rise and wane of active cases within a short period of time the trend line showed low  $R^2$  value which was non-significant.

The data validates our previous hypothesis that existence of prior immunization (with MMR) in the population of Lakshadweep played a significant role in rapid control of infection with SARS-CoV-2. Consistent with this data, the correlation study between the number of active cases and the number of confirmed cases of COVID-19 was not significant as shown in Figure: 4. This data implied that most individuals infected with the virus, SARS-CoV-2, did not progress to active stage of COVID-19, subsequently recovered completely from the disease.

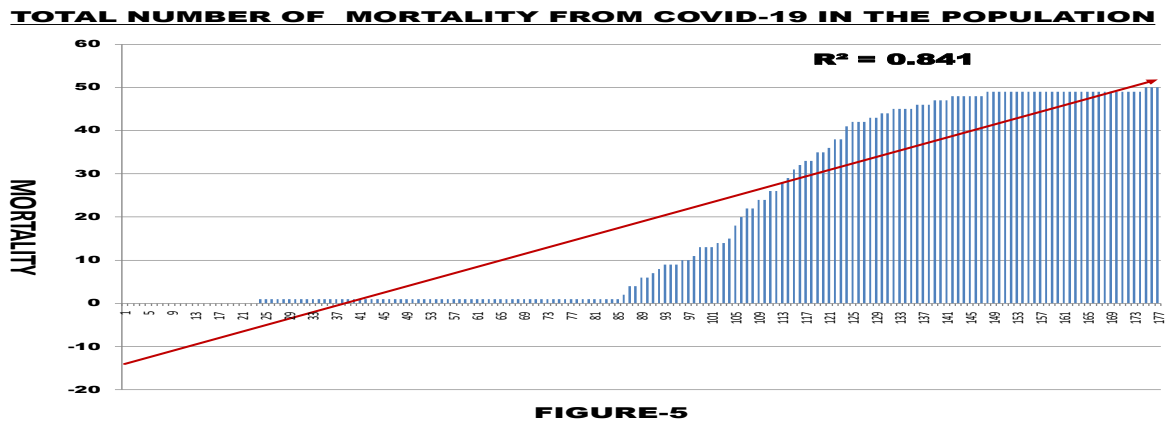
#### **CORRELATION OF ACTIVE CASES AND CONFIRMED CASES OF COVID-19**



**FIGURE-4**

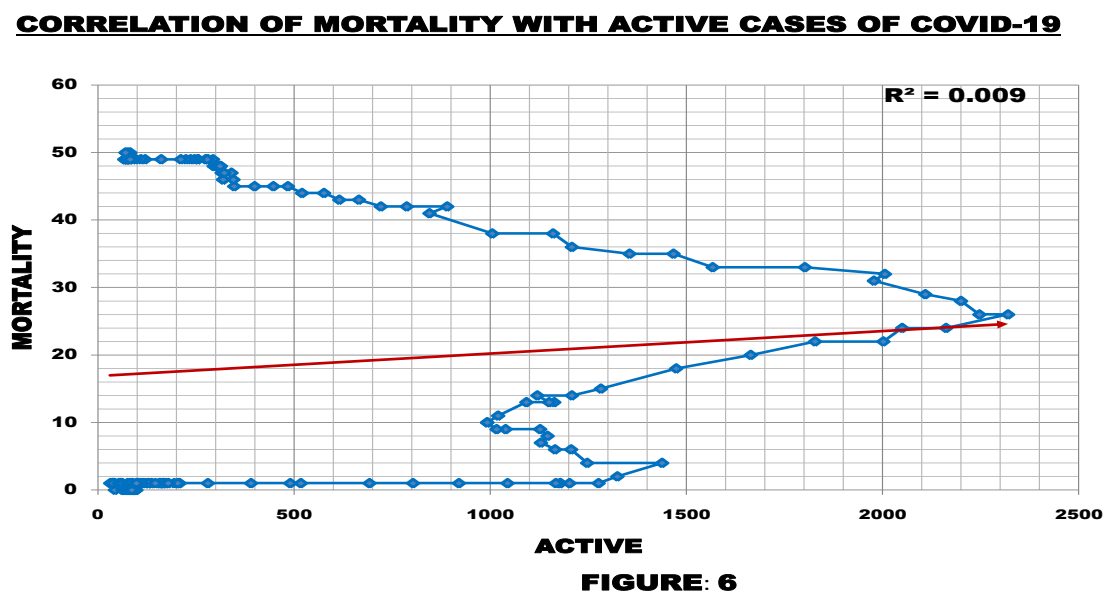
**Figure 4: There was no correlation between total number of confirmed cases of covid-19 and number of active cases of COVID-19.**

However, though there was no mortality from COVID-19 for a prolonged period of time in the population after the onset of COVID-19, there was an abrupt increase in mortality rate from the beginning of the second wave. The mortality rate could be due to higher viral load which was lethal for survival, irrespective of the immune status of affected individuals. The Figure 5 also reflected that though the mortality rate from COVID-19 abruptly increased, the number stabilized after some time and remained so until 31 July 2021. However, due to steep increase in mortality for a brief period of time, the trend line showed a significant value with  $p \leq 0.01$ .



**Figure 5: A significant increase in overall mortality from covid-19 in the population was observed.**

However, the correlation study between the overall mortality during the entire period of six months and the total number of active cases, showed a non-significant value. The result is depicted in Figure: 6.

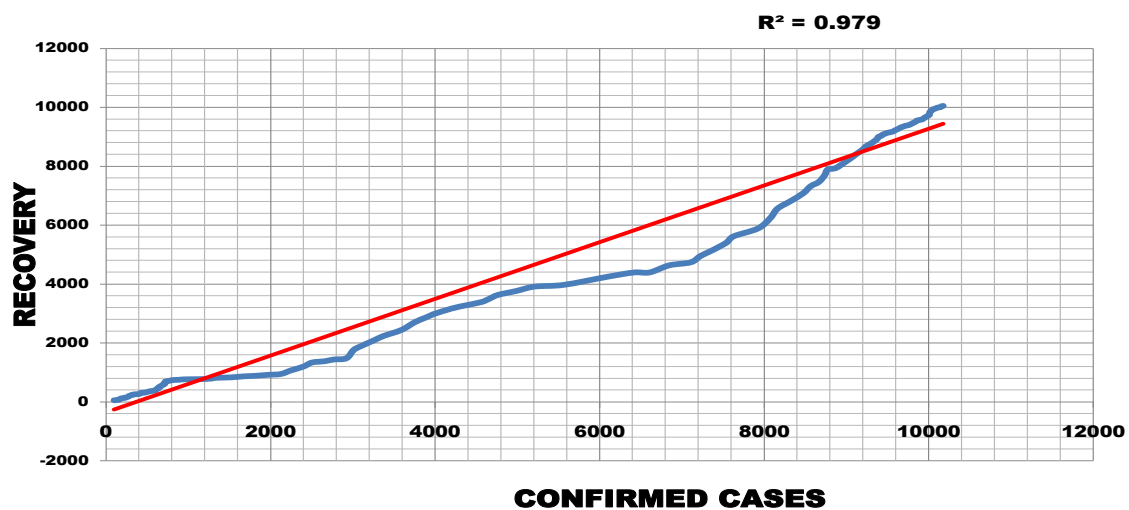


**Figure 6: No correlation was noted between the number of mortality from COVID-19 and active cases of COVID-19 when evaluated for the entire period.**

In this study, there was high and significant increase in the number of recovered cases from COVID-19 (98.7%), and a correlation study between

the two variables being highly significant ( $p \leq 0.001$ ) as shown in Figure: 7. Another interesting fact noted from recovery study was that the trend line and the actual number of recovered cases were overlapping from the time COVID-19 appeared in the population in January, 2021 until 31 July, 2021. This suggested that a persistent resistance to SARS-CoV-2 infection, in the population existed. The data was highly significant with  $p \leq 0.001$ .

#### **CORRELATION OF RECOVERY AND CONFIRMED CASES OF COVID-19**

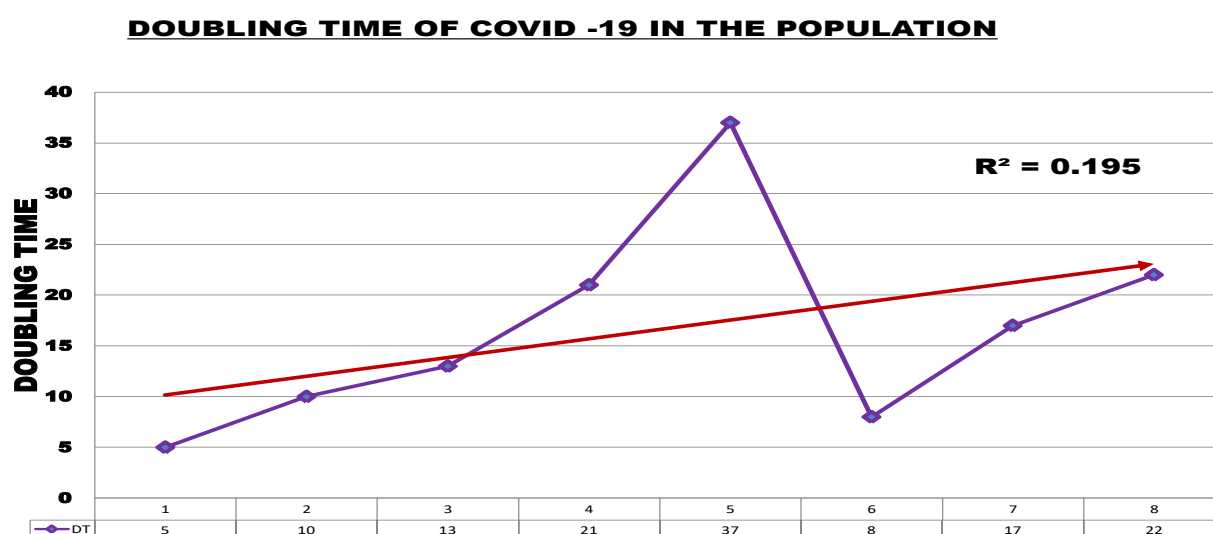


**FIGURE: 7**

**Figure 7: The graph depicts a positive correlation between trend of recovered and total number of COVID-19 cases ( $p \leq 0.001$ ).**

The high number of recovered cases with lower number of active cases was reflected in the rate of 'doubling' of COVID-19 in the population. The data is shown in Figure: 8. It is clear from the graph that the doubling time of COVID-19 was five days which gradually increased reaching a peak of 37 days and subsequently decreased to 7 days, with the second wave, and then

showed an upward trend reaching to 22 days by 1<sup>st</sup> June, 2021 and is still falling until July 31, 2021. The doubling time of COVID-19 was consistent with the ‘two waves’ that was observed in the number of active cases as shown in Figure: 3 and a flattened growth curve of COVID-19 as shown in Figure: 1.



**FIGURE:8**

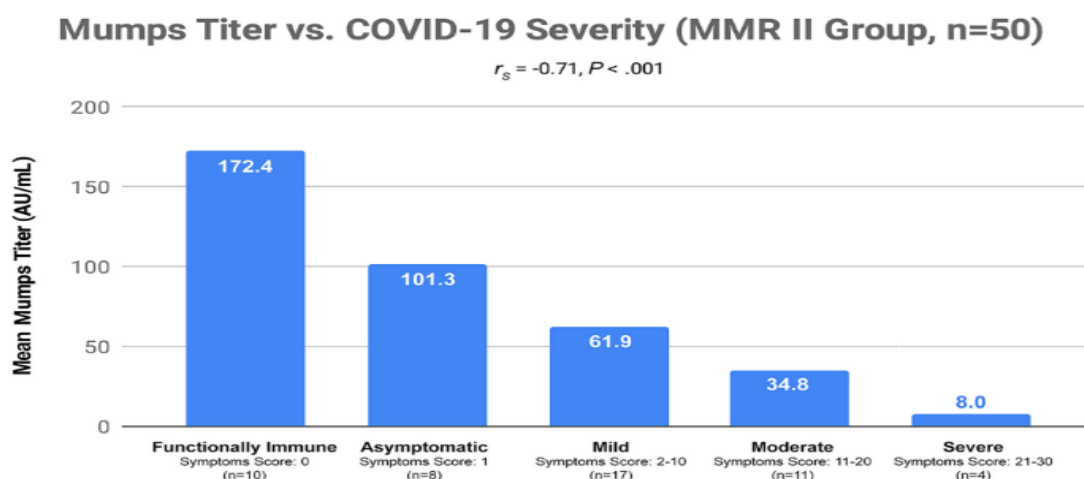
**Figure 8: The graph depicts the doubling time of COVID-19 in the population which registered a gradual increase in doubling time.**

One major conclusion that could plausibly be drawn from this entire study was the rise and rapid wane of active cases of COVID-19 in the population. This rapid fall in number of active cases was plausibly due to the presence of prior immunization in the population. The mass vaccination program with MMR vaccine undertaken in 2017 in the entire population played a significant role in development of immunity against SARS-CoV-2. It was previously articulated that the Lakshadweep population being immunized

against Mumps, Measles & Rubella earlier, was an impediment for the spread of SARS-CoV-2 in the population (8). And the infectivity rate of the virus during the early stage of the pandemic was very low and individuals with lower load of the virus showed a mild form of COVID-19 from which most of the individuals were able to recover completely.

As stated in above paragraphs that the population of Lakshadweep had a prior history of immunization. And under the Measles-Rubella (MR) campaign by the Government of India in collaboration with World Health Organization (WHO) in 2017, all children in the target age group (between 9 months and less than 15 years) were given a single shot of MR vaccination, irrespective of their previous measles/rubella vaccination status or measles/rubella disease status, to boost the immunity and protect the entire community against transmission of measles and rubella. A Study reported by Gold *et al* showed that antibody against MMR vaccine was found in individuals who recovered from COVID-19 suggesting that the memory cells to MMR vaccine actively participated in neutralising the SARS-CoV-2 virus. The significance of this study lies in the fact that mumps titers related to the vaccine were significantly and inversely correlated with the severity of COVID-19-related symptoms, supporting the theorized association between the vaccine and COVID-19 severity (9). A significant inverse correlation between mumps virus titers and COVID-19 severity within the MMR II group was observed in the study (Figure: 9). A survey of presence of MMR antibody in the recovered COVID-19 individuals in Lakshadweep has been planned to be undertaken soon. As pointed out earlier in our report (8) that ours was

the first field observation which had corroborated with the finding in the MMR study theorizing association between MMR vaccine and COVID-19 severity.



**FIG 1** Mean mumps titer values (in arbitrary units per milliliter) were compared to each of five severity categories. Each severity category was based upon the symptom scores shown in Fig. 2. "Functionally Immune" data represent subjects with a severity score of 0. "Asymptomatic" data represent those with a score of 1, i.e., those who were COVID-19 positive but had no symptoms. "Mild" data represent those with scores ranging from 2 to 10. "Moderate" data represent those with scores ranging from 11 to 20. "Severe" data represent those with scores from 21 to 30. A  $P$

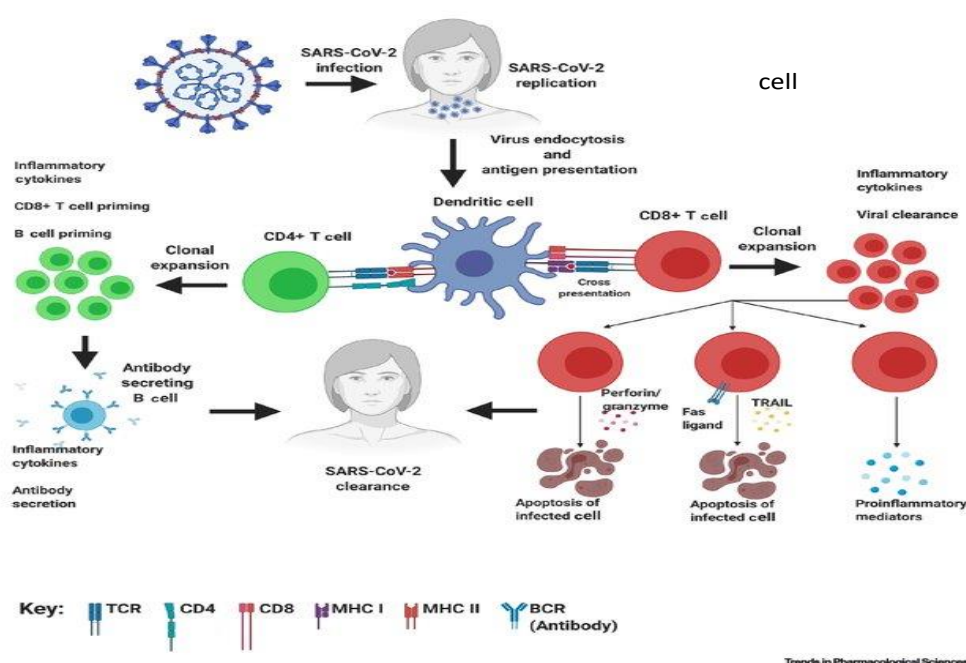
**FIGURE: 9**

**Figure 9: Analysis of MMR titers after recovery from COVID-19 (reference-9)**

Similar studies which investigated the effectiveness of booster vaccination of adults with measles-mumps-rubella in the COVID-19 infection rates predicted that immunity produced by MMR vaccination boosters could provide some degree of protection against COVID-19 in the adult population and it could help develop immunological memory (10, 11). Corroborating this observation, scientific studies have shown that immune cells which were exposed to a viral antigen responded to related/unrelated viral antigen(s). In a study, blood collected from SARS-CoV-1 infected individuals in the year 2015, mounted an immune response, *in vitro*, against SARS-CoV-2 infected cells in 2020, without being exposed to the SARS-CoV-2

virus, suggesting that an immunological memory was generated in the SARS-CoV-1 infected individuals which could cross-act against SARS-CoV-2; probably because both were having similar backbone DNA (12).

Analysis of immunological and epidemiological data on endemic human coronaviruses (HCoV) showed that infection-blocking immunity wanes rapidly, but disease-reducing immunity was long-lived (13). This was evident from the data presented in this study. However, with the appearance of several delta-variants of SARS-CoV-2 due to selection pressure, vaccination, in addition to having immunity against the virus, is the only effective way to fight the fast changing virus. Unfortunately, the vaccines available until now generate predominantly a B- cell response. Whereas, effective vaccine against a virus requires to engage T cells, as the figure below demonstrate (Figure: 10).



**FIGURE: 10**



It is apparent that ending the current COVID-19 pandemic and preventing recurrence requires the development of vaccines that provide long-lasting immunity to the causative virus SARS-CoV-2 and to achieve this, a vaccine must elicit CD4 and CD8 T cell immunity in addition to the production of neutralizing antibodies (nAB) by B cells. The rationale is based on the findings for SARS-CoV-2 and the related SARS-CoV virus which caused the 2002/2003 SARS pandemic that there is important need to design COVID-19 vaccines which co-engage T cells in addition to B cells for generating long lasting memory (14, 15 ).

#### **IV. Acknowledgements :**

- Government of India & related websites for the data on COVID-19
- Different News channels of India & NY times, for the information regarding COVID-19.
- Thanks to Dr. Prabal Chakravarty for providing assistance in preparation of Manuscript and for providing encouragement.

#### **V. References:**

1. Chakravarty, P. (2020) A simple method for detecting early signal in nature of progression of Covid-19 in Indian population. *Sumerianz. Journal of Biotechnology*, 3 (2), 10-13 & Preprints 2020, 2020040041 (doi: 10.20944/preprints202004.0041.v1).
2. Chakravarty, P. (2020) COVID-19 follows a flattened growth curve subsequent to prolonged intervention in a Population; it's Implication on

rate of Doubling Time & plausible suppression of SARS-CoV-2 infection. *Journal of Biomedical Science and Research*, Volume 2 (1), 1-4.

3. Chakravarty P (2020) Percent alteration accurately reflects progression, intervention and any abrupt changes occurring in a population: Plausible significance of the sudden spurt in spread of Covid-19. *Journal of Biomedical Science & Research* 2 (2); doi: 12410.5281/zenodo.4283199.
4. Chakravarty P. (2020). Increased doubling time with significant recovery and low mortality from COVID-19 following extended lockdown: Implication for development of protective immunity against SARS-CoV-2 in a population. *Journal of Current Trends in Clinical Biology Research* 1(1): 102.
5. Chakravarty, P. (2020). Significant waning of active cases of Covid-19 with high recovery after three months of complete Lockdown: Plausible implication on emergence of herd immunity in the population. *Advances in Bioengineering & Biomedical Science Research*, Volume 3 (3), 121-126. Available: [doi.org/10.33140/ABBSE.03.03.07](https://doi.org/10.33140/ABBSE.03.03.07)
6. Chakravarty, P. (2021) Near complete protection against Covid-19 in a section of population: Implication of lockdown on development of passive vaccination to counter SARS-CoV-2 attack. *Sumerianz. Journal of Biotechnology*, Volume 4 (1): 5-13. Available: [doi.org/10.47752/sjb.41.8.15](https://doi.org/10.47752/sjb.41.8.15).
7. Chakravarty P. (2021) Plausible Transition of Covid-19 from Pandemic to an Endemic State: Impact of Variant UK Strain, b 7.1.1, on the Spread of Covid-19 in the Population. *Adv Bioeng Biomed Sci Res* 4(1): 01-07.
8. Chakravarty P. (2021) COVID-19 in the Indian Territory of Lakshadweep – Role of MMR Vaccination in the Management of COVID-19 Pandemic.

*Sumerianz Journal of Medical and Healthcare*, 2021, Vol. 4, No. 3, pp. 123-13. DOI: <https://doi.org/10.47752/sjmh.43.123.1311>

9. Gold JE, Baumgart WH, Okay RA, Licht WE, Fidel PL, Jr. Noverr MC, Tilley LP, Hurley DJ, Rada B, Ashford JW. (2020) Analysis of measles-mumps-rubella (MMR) titers of recovered COVID-19 patients. *mBio*11:e02628 DOI; 10.1128/mBio.02628-20.
10. Bianchi FP, Sara DN, Stefanizzi P et al. (2019). Immunity to rubella: an Italian retrospective cohort study. *BMC Public Health*.19:1490. Available at: [doi.org/10.1186/s12889-019-7829-3](https://doi.org/10.1186/s12889-019-7829-3)
11. Erhan Yengil, Yusuf Onlen, Cahit Ozer, Mustafa Hambolat, Mehmet Ozdogan. Effectiveness of Booster Measles-Mumps-Rubella Vaccination in Lower COVID-19 Infection Rates: A Retrospective Cohort Study in Turkish Adults. *International Journal of General Medicine* 2021;14 1757–176
12. Grifoni, A., Weiskopf, D., Sydney, I., and Ramirez, S. I., 2020. "Targets of T cell responses to SARS-CoV-2 coronavirus in humans with COVID-19 disease and unexposed individuals." *Cell*, vol. 181, pp. 1–13.
13. Lavine JS. et al. (2021). Immunological characteristics govern the transition of COVID-19 to Endemicity. *Science*10.1126/science.abe6522.
14. Sauer K and Harris T. (2020). An Effective COVID-19 Vaccine Needs to Engage T Cells. *Immunology*. <https://doi.org/10.3389/fimmu.2020.581807>
15. Altmann, DM. and Boyton, RM. (2020) SARS-CoV-2 T cell immunity: Specificity, function, durability, and role in protection. *Science Immunology*, volume: 5, 49. Available: doi:10.1126/sciimmunol.abd616.